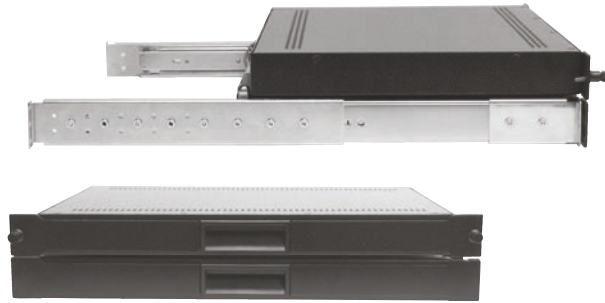


2U 17" LCD KVM CONSOLE



Keyboard shown for reference only.
Cherry™ KB w/ trackball is similar.



- 17" Monitor, Cherry™ KB w/ trackball, plus storage area occupies 2U of 19" rack space.
- Included adjustable mounting depth ball bearing slides lock in the fully extended position.
- Monitor powers off preserving back light life when tilted down for sliding into the rack.
- Retainer and lock options to keep unit contained in the rack when not in use.
- Housed in rugged steel construction with a durable powder coat finish.
- Reduced rack depth for mounting in confined spaces.

DISPLAY SPECIFICATIONS

Display Type:	Active matrix TFT LCD	Resolution:	640 x 350 640 x 480 800 x 600 1024 x 768 1280 x 1024
Colors:	16.7 million colors	Display Area:	17" Diagonal
Contrast Ratio:	1000:1 typ.	Horizontal Frequency:	31 to 80 KHz
Brightness:	250 cd/m ² typ.	Vertical Frequency:	55 to 76 Hz
Viewing Angle:	Horizontal: 170° Vertical: 160°	Response Time (TYP):	5ms

KEYBOARD AND MOUSE SPECIFICATIONS

Rollover:	Alpha N-key rollover
Auto repeat:	Yes
Self Diagnostics:	At power on and system reset
Data Buffer:	All codes buffered before sending
Operating voltage:	+5 VDC +/- 5%
Operating current:	200 mA
Trackball Size:	16mm (optical sensor)
Touchpad Size:	2.1" X 1.25"
Buttons:	Left and Right, Scroll (touchpad)
Interface:	USB, or optional PS/2 (P)
Compatibility:	Windows operating systems Specifications subject to change without notice.

We offer OEM and custom solutions.
Contact us for additional information.



GENERAL SPECIFICATIONS

Chassis Dimensions:	19.0" (W) x 3.50" (H) x 13.25" (D)
Weight:	20 lbs
Power (TFT Display):	90 - 260 VAC, 50/60 Hz. 60 Watts maximum
On-Screen Controls:	Brightness, Contrast, Horizontal & Vertical Position, Auto Adjust, OSD H & V Position, Load and Save Values
Plug & Play:	DDC1 and DDC2B
Temperature:	Operating: 0°C to 50°C Storage: -20°C to 60°C
Humidity:	Operating: 10 to 85% RH (max)
Input Signal (VGA):	R.G.B. analog video, TTL H & V sync
Input Connector:	Display: 15-pin mini D-Shell
Colors Available:	Black

MODEL NUMBER

RMM-847XX

Blank	= Standard Front Panel
R	= Front Panel + Retainer Screws
L	= Front Panel + Lock
C	= Front Panel + Lock + Retainer Screw
Blank	= USB
P	= PS/2

RECORTEC

www.recortec.com
sales@recortec.com

2231-A Fortune Drive Tel: 408-928-1480
San Jose, CA 95131 Fax: 408-928-1489