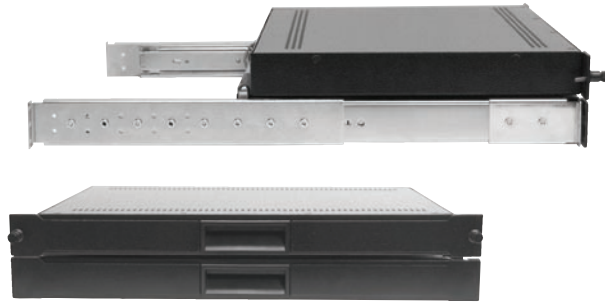


2U 17" AND 19" LCD KVM CONSOLES



- Monitor, keyboard with trackball/touchpad choice plus storage area occupies 2U of 19" rack space.
- Included adjustable mounting depth ball bearing slides lock in the fully extended position.
- Monitor powers off preserving back light life when tilted down for sliding into the rack.
- Retainer and lock options to keep unit contained in the rack when not in use.
- Housed in rugged steel construction with a durable powder coat finish.
- Reduced rack depth for mounting in confined spaces.

DISPLAY SPECIFICATIONS

Display Type:	Active matrix TFT LCD	Resolution:	640 x 350 640 x 480 800 x 600 1024 x 768 1280 x 1024
Colors:	16.7 million colors	Display Area:	17" - 17" Diagonal 19" - 19" Diagonal
Contrast Ratio:	17": 1000:1 typ. 19": 800:1 typ.	Horizontal Frequency:	31 to 80 KHz
Brightness:	17": 250 cd/m ² typ. 19": 270 cd/m ² typ.	Vertical Frequency:	55 to 76 Hz.
Viewing Angle:	17" 170° 19" 178° Horizontal: 170° 178° Vertical: 160° 178°	Response Time (TYP):	5ms 18ms

KEYBOARD AND MOUSE SPECIFICATIONS

Rollover:	Alpha N-key rollover.
Auto repeat:	Yes.
Self Diagnostics:	At power on and system reset.
Data Buffer:	All codes buffered before sending.
Operating voltage:	+5 VDC +/- 5%.
Operating current:	200 mA.
Trackball Size:	16mm (optical sensor)
Touchpad Size:	2.1" X 1.25"
Buttons:	Left and Right, Scroll(touchpad)
Interface:	PS/2, USB (U) optional.
Compatibility:	Windows operating systems. Specifications subject to change without notice.

We offer OEM and custom solutions.
Contact us for additional information.



GENERAL SPECIFICATIONS

Chassis Dimensions:	17": 19.0" (W) x 3.50" (H) x 13.25" (D) 19": 19.0" (W) x 3.50" (H) x 14.90" (D)
Weight:	20 lbs
Power (TFT Display):	90 - 260 VAC, 50/60 Hz. 60 Watts maximum
On-Screen Controls:	Brightness, Contrast, Horizontal & Vertical Position, Auto Adjust, OSD H & V Position, Load and Save Values
Plug & Play:	DDC1 and DDC2B
Temperature:	Operating: 0°C to 50°C Storage: -20°C to 60°C
Humidity:	Operating: 10 to 85% RH (max)
Input Signal (VGA):	R.G.B. analog video, TTL H & V sync.
Input Connector:	Display: 15-pin mini D-Shell
Colors Available:	Black.

MODEL NUMBER

RMM-8(X)(X)(X)

Blank = Standard Front Panel	
R = Front Panel + Retainer Screws	
L = Front Panel + Lock	
C = Front Panel + Lock + Retainer Screw	
Std KB w/trackball = 3	
Cherry™ KB w/ trackball = 4	
Std KB w/touchpad = 5	
7 = 17" TFT Display	
9 = 19" TFT Display	

RECORTEC, INC.

www.recortec.com
sales@recortec.com

1-800-729-7654

3329 Kifer Road Santa Clara, CA 95051
Tel: 408-928-1480 Fax: 408-928-1489